

# RiverWare Direct Data Connections

- Allow RiverWare to connect directly to databases
- First database is Corps of Engineers Data Storage System (DSS)
- Part of the integration of RiverWare into the Corps Water Management System (CWMS)

# Highlights

- Extensible architecture
- Database-neutral front end
- One or more database-specific back ends
- All configuration through the user interface

# Three Main Components

- Name Maps
- Datasets
- Database DMI

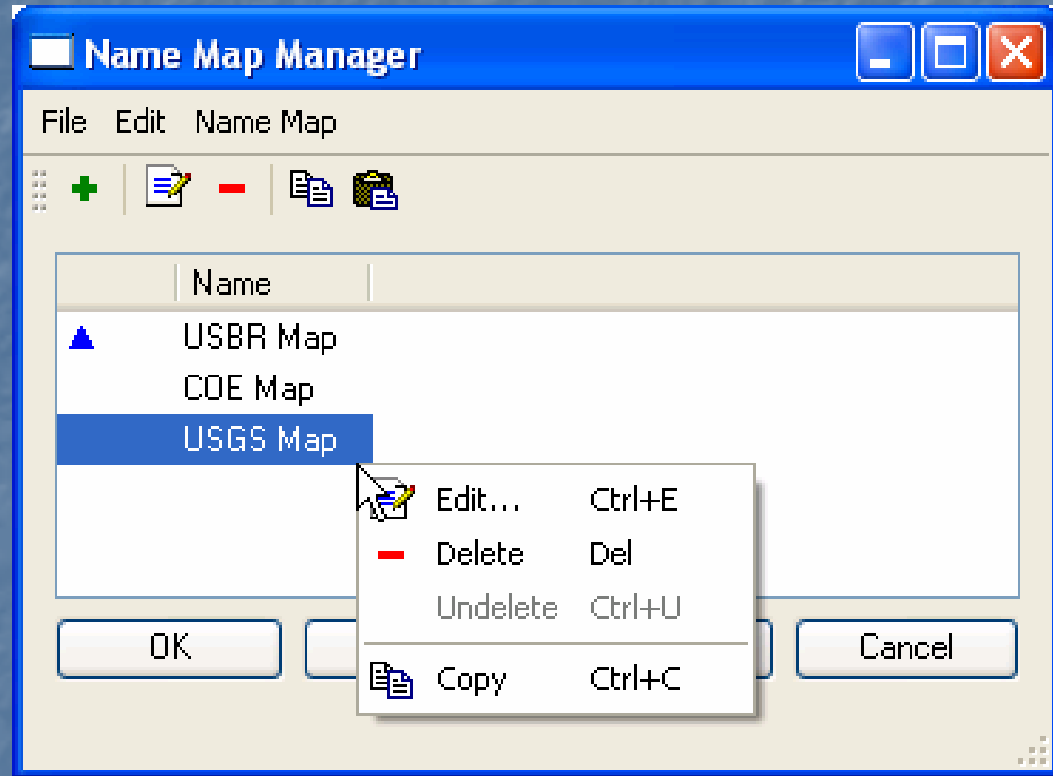
# Name Maps

- RiverWare entities (Simulation Object, Account, Slot, etc.) quite possibly have different names in the model than in the database
- Name maps map RiverWare names to their database names

# Name Map Manager

Manage a collection of name maps:

- Add
- Delete
- Edit
- Copy
- Paste



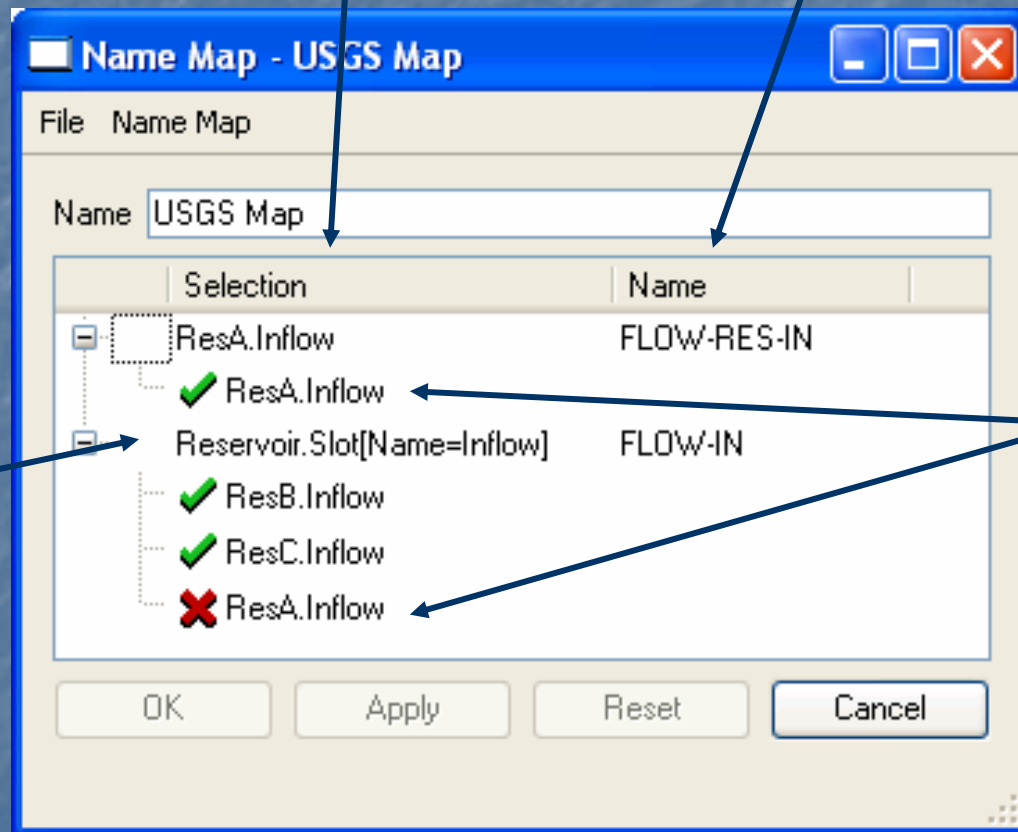
# Name Map Editor

RiverWare entity

Database name

Wildcard selections

Prioritized Selections



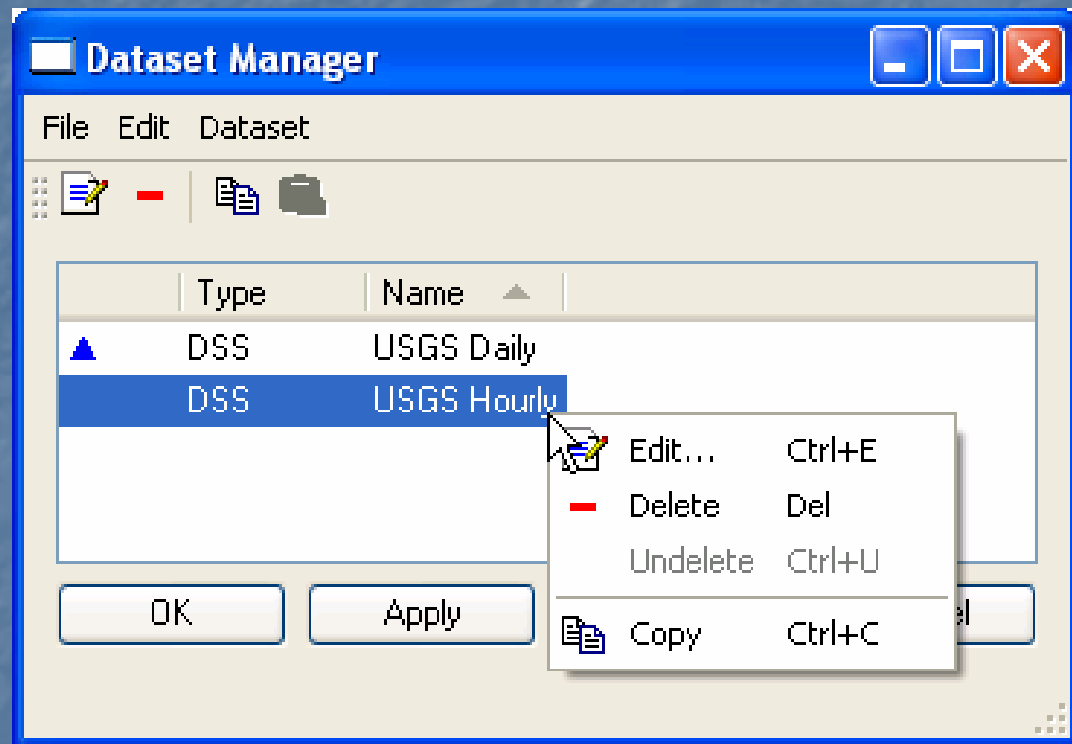
# Datasets

- Database specific (e.g., DSS specific)
- Encapsulate all RiverWare knowledge about the database
- Generally two types of knowledge:
  - Configuration information
  - Database interaction

# Dataset Manager

Manage a collection of datasets:

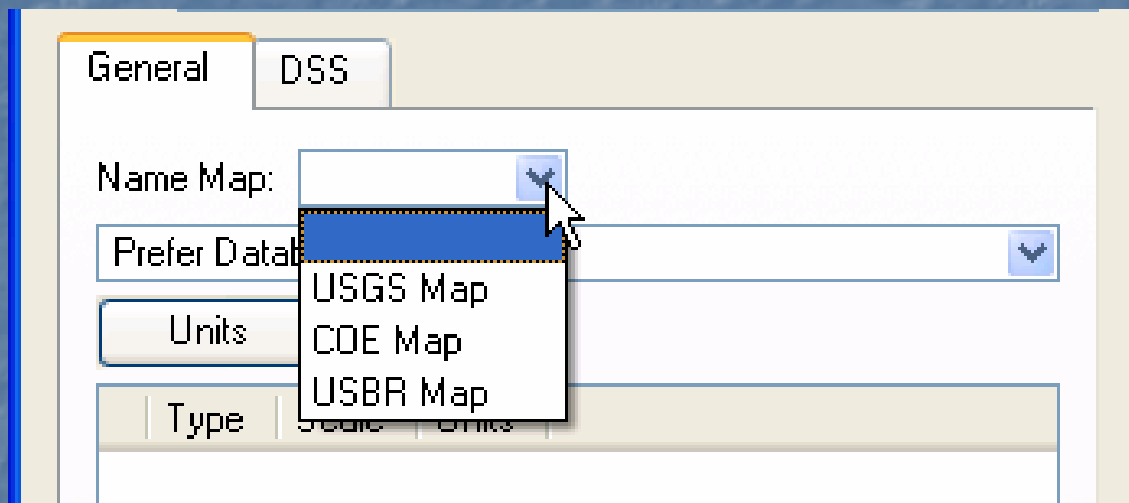
- Add
- Delete
- Edit
- Copy
- Paste





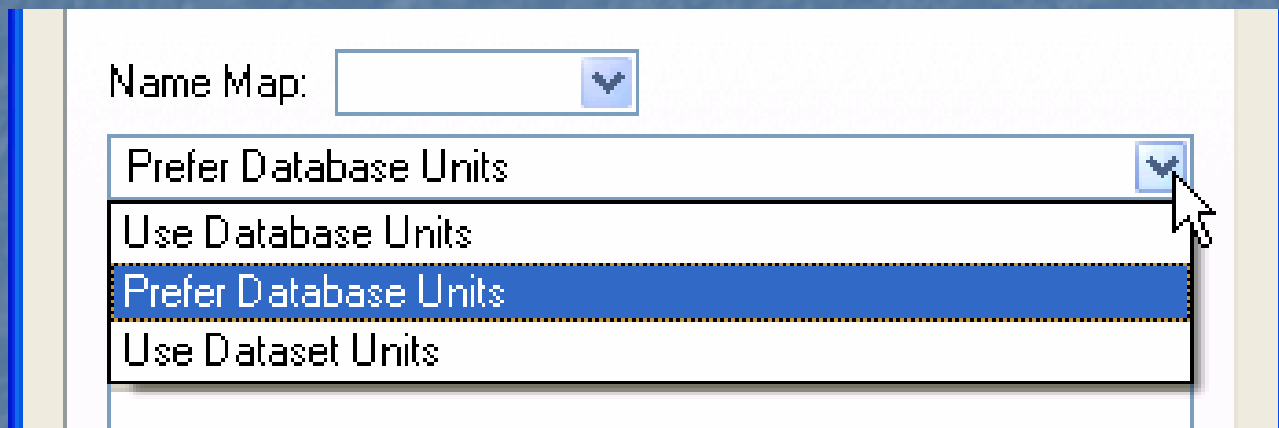
# General Configuration – Name Map

- Select the name map



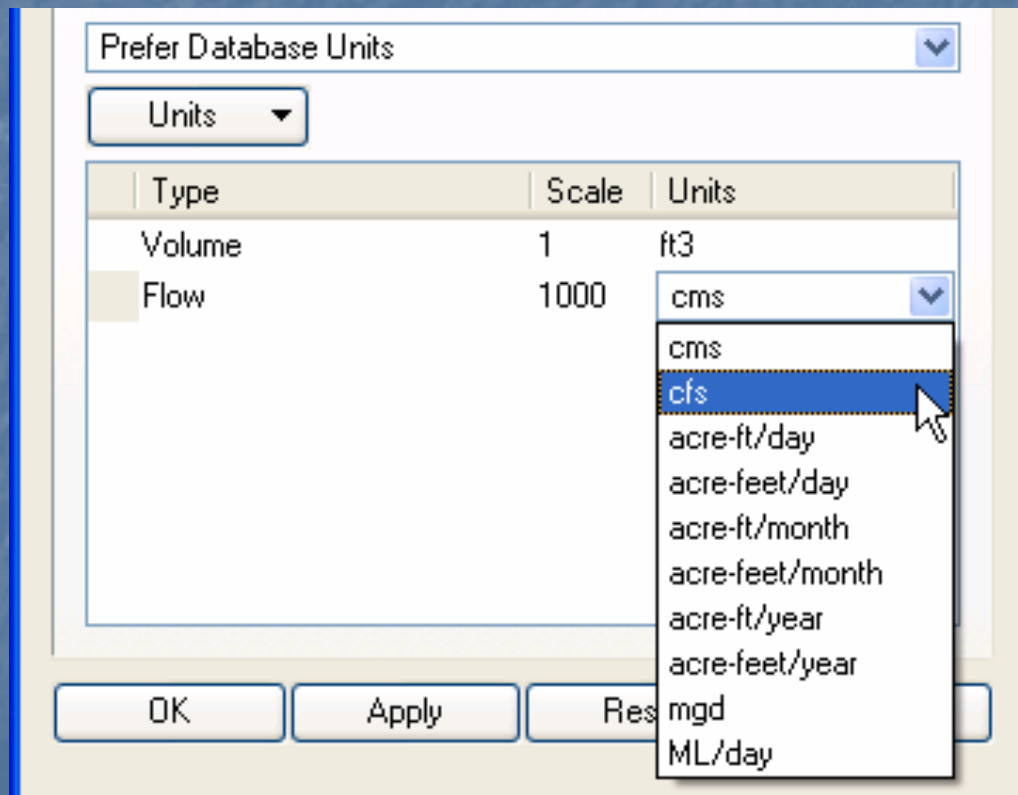
# General Configuration – Units

- Select the unit behavior
  - Get units from the database
  - Get units from the database or the dataset
  - Get units from the dataset



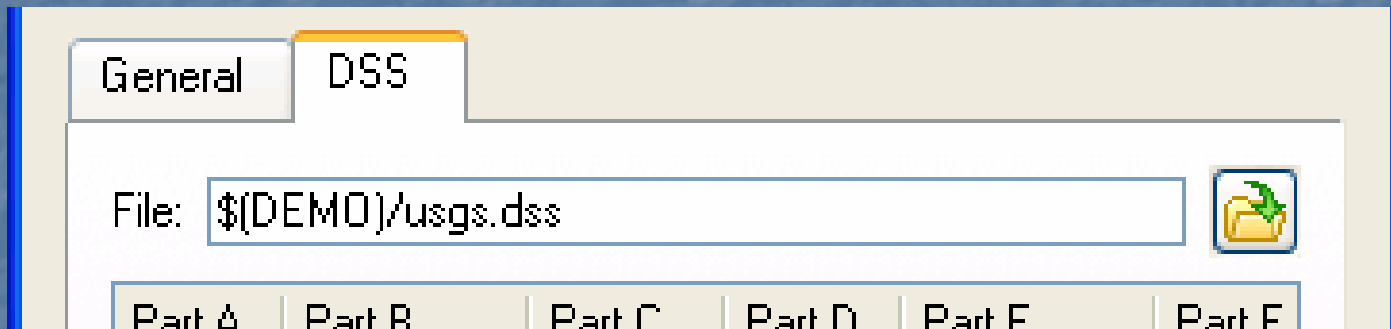
# General Configuration – Units

- If getting units from the dataset, select the units



# DSS Configuration – File

- Select the path with a file chooser or enter it as text



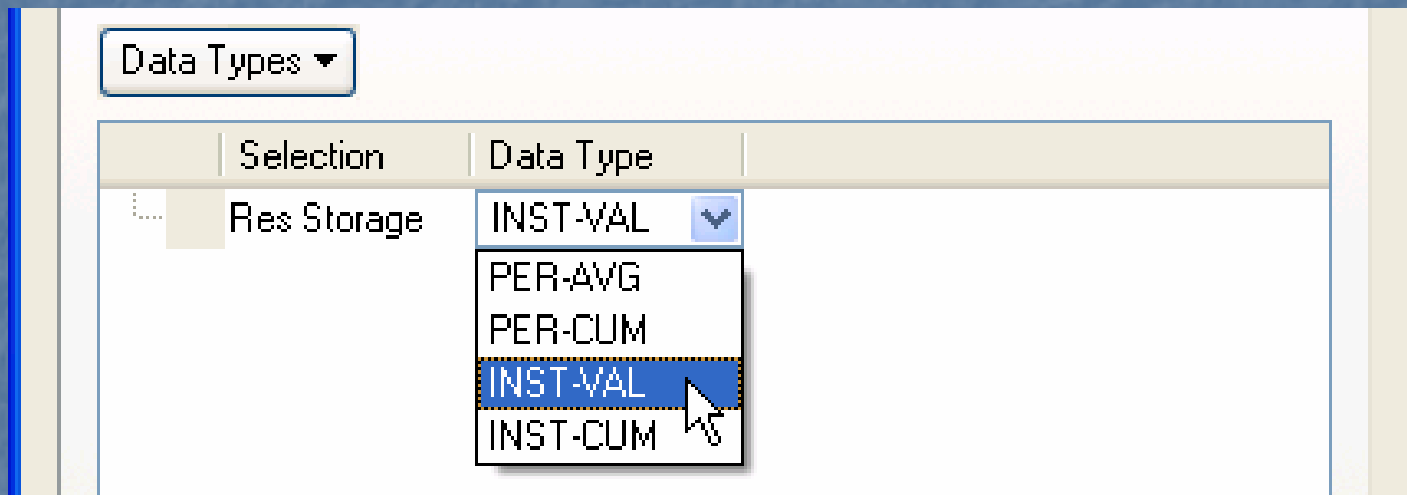
# DSS Configuration – Parts

- Enter A, F; RiverWare provides
  - B – mapped object name
  - C – mapped slot name
  - E – slot timestep

| Part A    | Part B             | Part C           | Part D | Part E        | Part F                           |
|-----------|--------------------|------------------|--------|---------------|----------------------------------|
| Big Muddy | Mapped Object Name | Mapped Slot Name |        | Slot Timestep | <input type="text" value="OBS"/> |

# DSS Configuration – Data Types

- Specify slot data types



# Database DMI

- Specify slots to import or export data
- Specify time intervals to import or export data
- Associate slot and time interval pairs with datasets

# Database DMI – Slots and Intervals

Select slots

Enter begin, end dates as symbolic date/times;  
common dates are on context menu

Slot can  
have  
multiple  
time  
intervals

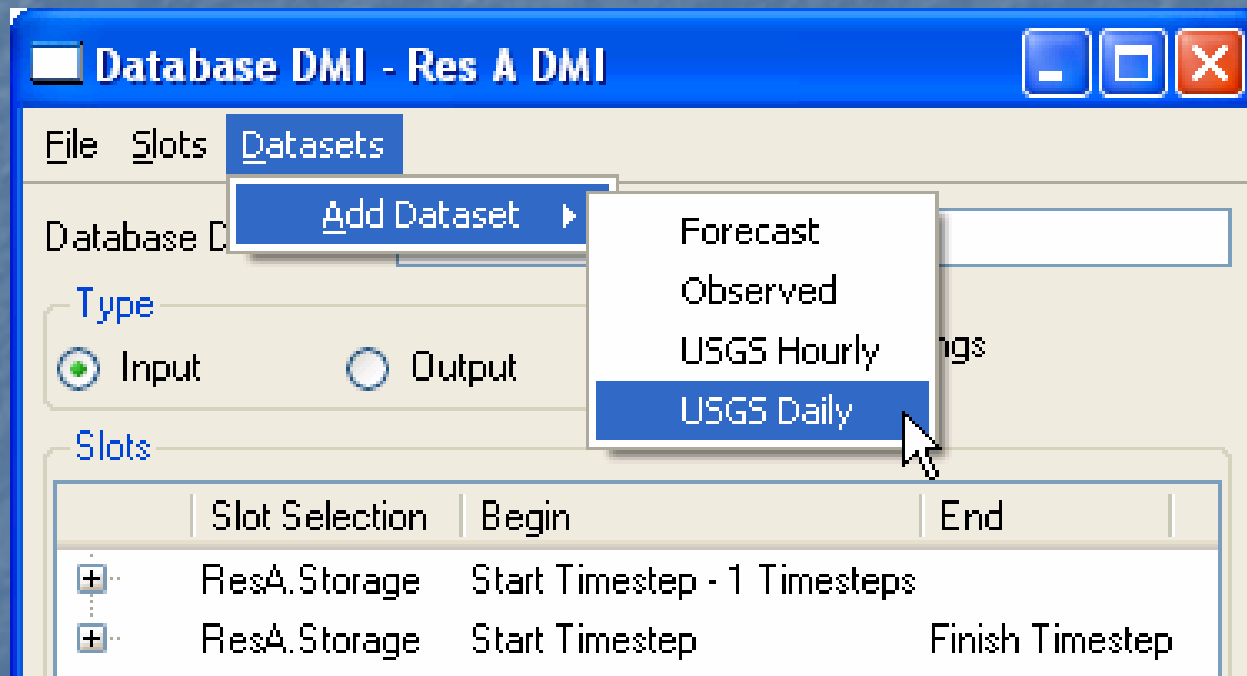
| Slot Selection | Begin                        | End |
|----------------|------------------------------|-----|
| ResA.Storage   | Start Timestep - 1 Timesteps |     |
| ResA.Storage   | Start Timestep               |     |

- Start Timestep
- Start Timestep + N Timesteps
- Start Timestep - N Timesteps
- Finish Timestep
- Finish Timestep + N Timesteps
- Finish Timestep - N Timesteps



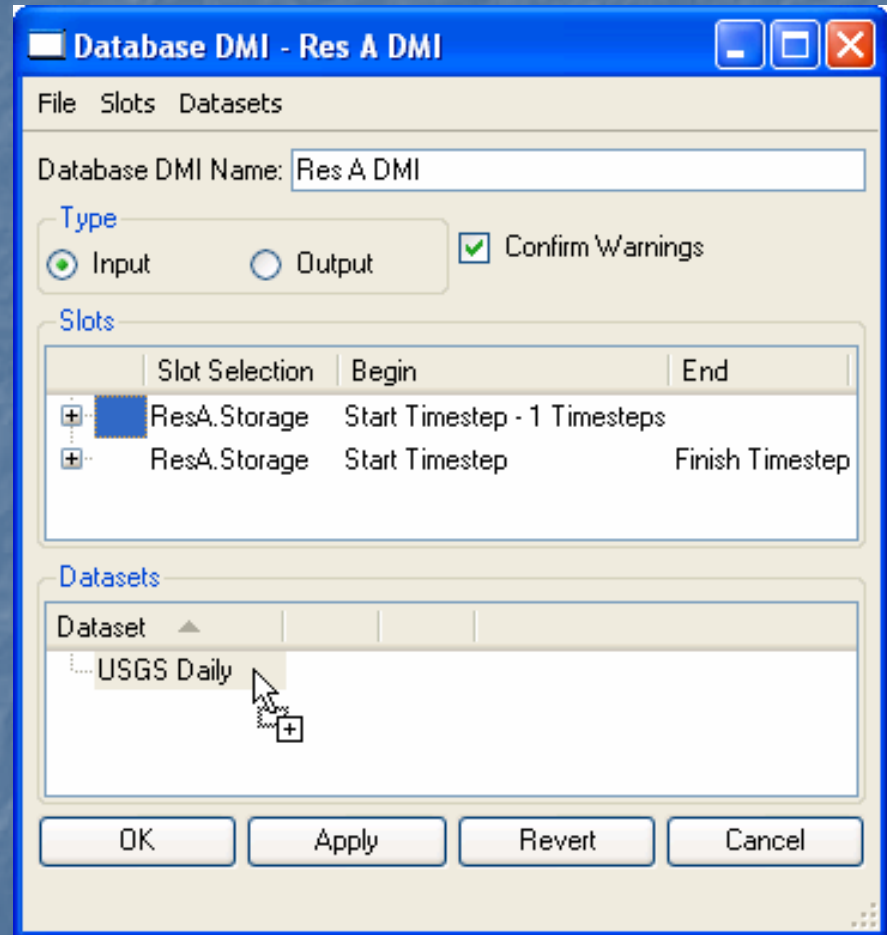
# Database DMI – Datasets

Add datasets to the database DMI



# Database DMI

Associate slot and time interval pair with a dataset by dragging it and dropping it



# Database DMI

Multiple slots can import or export data

Multiple datasets can import or export data for a slot

